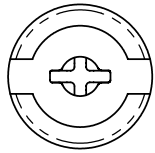
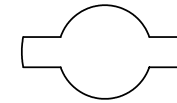
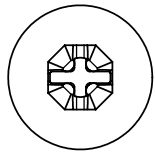
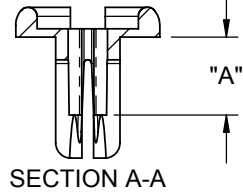
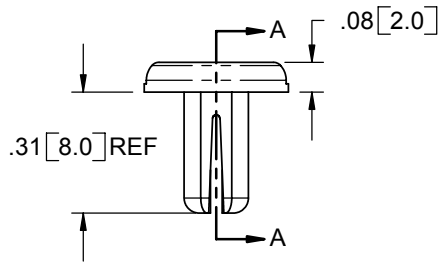


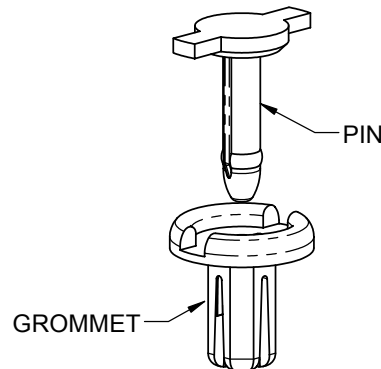
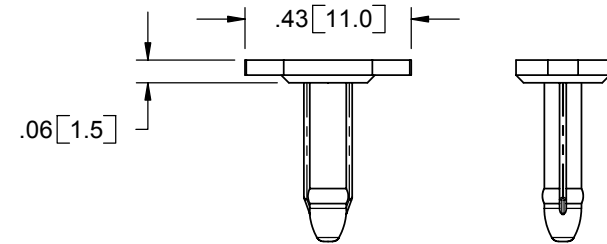
PART NO.	HOLE DIA. RANGE	PANEL THICKNESS	"A" REF
RRR-1	.188-.208 [4.76-5.28]	.059-.138 [1.5-3.5]	.14 [3.6]
RRR-2		.138-.217 [3.5-5.5]	.17 [4.4]



GROMMET



PIN



- NOTES:
 1. MATERIAL: NYLON 66/6 (RMS-103)
 2. COLOR: BLACK
 3. RIVET TO FIT IN INDICATED DIAMETER HOLE,
 OR .177 [4.5] MIN SQUARE HOLE
 4. PIN AND GROMMET ARE SUPPLIED UNASSEMBLED

B	SEE ECN # 1133 FOR CHANGES	S.J.	03/03/06
A	RELEASED FOR PRODUCTION	SK	06/15/05
REV.	DESCRIPTION	ENGR.	DATE

TITLE: RICHCO REMOVABLE RIVET						DWG IN IN [MM]	
CREATED USING SOLIDWORKS	FILE #: RRR-X	DWN: SK	APP: SK	FINAL			
TOLERANCES UNLESS NOTED .XX=±.010 .XXX=±.005 FRAC.=±1/64 ANG.=±1°	SHEET: 1 OF 1	SHEET SIZE: A	DT: 06/15/05	CHKD: DJZ	PART #		PRINT TYPE
RE: RICHCO, INC.		RICHCO, INC. ENG@RICHCO-INC.COM (773) 539-4060		SEE TABLE		CA	